

**Plaza 550**

(602) 266-5822

550 East Earll Drive  
Phoenix, AZ 85012

**PLAZA 550**

## Description

### Enjoy Style and Quality at a Price You Can Afford

Welcome to Plaza 550 our chic, renovated community is sure to please everyone. Our floor plans are tastefully designed with your maximum comfort in mind. Our property boasts energy saving upgrades, gourmet-style kitchens, two refreshing pools and lush landscaping. We have all that you desire and everything you deserve. Plaza 550 is conveniently located on Earll Drive between 3rd and 7th St. allowing a quick walk to the new Light Rail; or just a short drive to I-10 and 17 allowing you to be within minutes of fantastic shopping, dining, entertainment and culture. Stop by today we can't wait to have you as a resident!

## Floor Plans and Pricing

Floor Plan	Beds	Baths	Sq. Ft.	Rent
1 Bed 1 Bath	1	1	600	\$549 - \$599

## Property Amenities

- Pool
- Laundry
- Short Term Lease
- Night Patrol
- High Speed Internet Available
- Near Public Transit
- BBQ/Picnic Area
- Courtyard
- Parking
- Ramp Entry

## Office Hours

*Monday:* 10:00am to 2:00pm  
*Tuesday:* 9:00am to 5:00pm  
*Wednesday:* 9:00am to 5:00pm  
*Thursday:* 9:00am to 5:00pm  
*Friday:* 9:00am to 5:00pm  
*Saturday:* 10:00am to 5:00pm

## Lease Terms

6-14 months.

## Parking

Type - Covered Lot

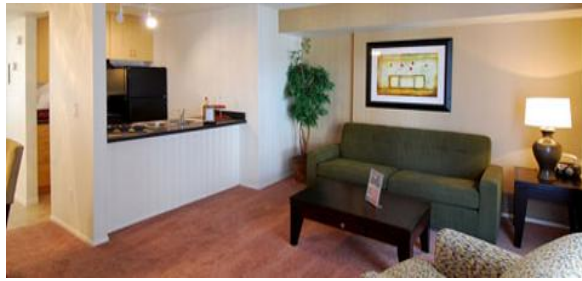
## Pet Policy

### Pet Policy:

Cats and Dogs are allowed.  
 Maximum Pet Weight: 50  
 Maximum Number of Pets: 2

### Restrictions or other terms:

Select Units/Restrictions Apply.Call for Details.



Plaza 550

(602) 266-5822

550 East Earll Drive  
Phoenix, AZ 85012

PLAZA 550

Map

